

TRANSITION TO ADULTHOOD

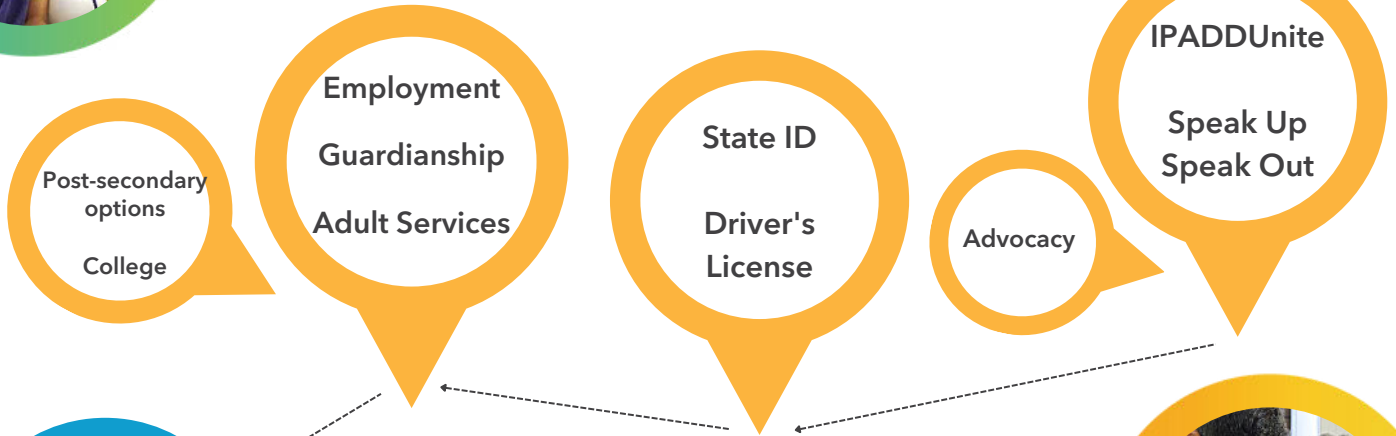
JOURNEY TO SUCCESS

START

PLAN



CONNECT



EXPLORE



CLEARBROOK
Enrich Lives. Embrace Potential.

TRANSITION TO ADULTHOOD

TIMELINE



MIDDLE SCHOOL AGE AND HIGH SCHOOL FRESHMEN - PLAN AND CONNECT

- Begin IEP Transition planning age 14½ - FMPTIC, EFE
- Update PUNS, as needed with (ISC) agency - ISC
- Consider attending statewide IL Transition Conference
- Consider Special Needs Trust - SNT
- Learn about ABLE accounts - ABLE
- Explore recreation and leisure interests and preferences - FMPTIC, EFE
- Develop independent living skills and increase self-advocacy skills - Advocacy
- Begin early career exploration and assist with chores around the house - EFE
- Volunteer and participate in community service projects - EFE

HIGH SCHOOL (16-18 YEARS OLD) - EXPLORE AND PREPARE

- Vocational interest survey for parents and students - EFE
- Discuss eligibility for DRS/VR (for employment assistance) - DRS/VR
- Consider school and community based work experience programs - IL Lifespan
- Obtain State ID - DMV
- Explore Supported Decision-Making/Guardianship/Powers of Attorney - IL Lifespan
- Discuss post-secondary education/training programs, tour schools programs - TOS
- Attend Transition Resource Fairs
- Transition planning in IEP; discuss graduation requirements and dates - EFE
- Explore Social Security and Medicaid benefits, eligibility, apply as appropriate - TOS
- Register to vote at age 18, Males register for selective service - DMV
- Update PUNS, as needed with (ISC) agency - ISC

POST HIGH SCHOOL (18-22 YEARS OLD) - ON YOUR WAY!

- Parental/school collaboration and advocacy to develop independence - FMPTIC, EFE
- Develop independent living, vocational, social, recreation, leisure skills - EFE
- Explore transportation: RTA, local townships, Paratransit, Uber/Lyft/taxi - RTA
- Obtain employment/enrollment in post-secondary education/training - DRS/VR, Post-Sec Ed
- Explore, tour adult service agencies/providers, attend Transition Resource Fairs - FMPTIC
- Learn about Adult Medicaid Waiver services/ CILA and HCBS (Community Integrated Living Arrangements, Home & Community Based Services) - TOS
- Link to adult service providers for employment, community day services, and residential living options, including supportive housing - ISC/TOS

For more information contact Michelle Schwartz at mschwartz@clearbrook.org

TRANSITION TO ADULTHOOD

RESOURCES



MIDDLE SCHOOL HIGH SCHOOL AGE 18-22

Advocacy
The Arc of Illinois provides statewide information and resources for people of all ages with developmental disabilities, family members, and professionals. Coordinates Speak Up Speak Out Summit (SUSO).

Related Information:

www.thearcofil.org 815.464.1832

www.speakupspeakoutsummit.org

DMV -- Department of Motor Vehicles
Illinois Legal Aid provides an online toolkit of the steps to complete the process.

<https://www.illinoislegalaids.org/legal-information/toolboxes/state-id/illinois-person-disability-id-card>

Application for ID Card -

https://www.ilsos.gov/publications/pdf_publications/dsd_x164.pdf

Register (males only) for selective service online or at the post office. <https://www.sss.gov/register/>
[Register to vote at the DMV, at your local election authority, or online](#) <https://ova.elections.il.gov/>

DRS/VR -- Department of Rehabilitation Services / Vocational Rehabilitation
<https://www.dhs.state.il.us/page.aspx?item=29736>
Assists people with disabilities and their families in making informed choices to achieve full community participation through employment, education, and independent living opportunities. Includes links to Home Service Program, Vocational Rehabilitation (VR), and employment services.

Equip for Equality
<https://www.equipforequality.org/issues/special-education/> 312.341.0022 Helpline toll-free: 1.866.543.7046

Special Education Clinic helps train guardians to be an active partner for their child, know legal rights, answer questions, and provides the Transition Planning Tool.

FMPTIC -- Family Matters Parent Training and Information Center

<https://www.fmptic.org/> 866.436.7842

Parents, students, and educators get assistance with special ed. problems or concerns, obtain information, and request free training on special education rights and responsibilities and related topics.

Illinois ABLE

<https://illinoisable.com> 888.609.8683

ABLE "Achieving a Better Life Experience" allows people with disabilities to save without impacting their benefits.

National Resource Center:

<https://www.ablenrc.org/>

IATP-WIPA -- Illinois Assistive Technology Project

<https://iltech.org/services/work-incentives-planning-and-assistance> 800.852.5110

The Work Incentives Planning Assistance helps individuals with disabilities understand how working will affect their public benefits.

Illinois Life Span

www.illinoislifespan.org 800.588.7002

Provides statewide resources and information focused on developmental disability services and supports through an online database or by phone.

Transition Resource Page:

<https://www.illinoislifespan.org/website-links/transition-resources/>

Illinois Statewide Transition Conference

<https://www.illinoistransitionconference.org/>

Conference for Transition age youth and young adults with disabilities, family members, educators, and other professionals focusing on best practices in promoting effective transition planning addressing all aspects of adult life.

TRANSITION TO ADULTHOOD

RESOURCES



MIDDLE SCHOOL

HIGH SCHOOL

AGE 18-22

- Independent Service Coordination (ISC) Agency**
Entryway to connect to services for individuals with intellectual/developmental disabilities in IL.
- Northern Cook/Lake Counties**
www.cau.org 773.867.4000
Chicago South Side, West, Southwest Cook
www.cso1.org 773.471.4700
South Cook County
www.subacc.org 800.507.5057
Service Inc. www.svcincofil.org
Region A: McHenry, DeKalb, Boone, Winnebago, Ogle, Lee, Carroll 815.339.0740
Region E: DuPage, Kane, Kendall 630.425.2350
Region F: Will, Grundy, Kankakee 815.741.0800
- IPADDUnite**
<https://www.ipaddunite.org/>
Provides Illinois parents, self-advocates, and others who care about adults with developmental disabilities online networking, advocacy, and information sharing.
- Post-Secondary Education Programs for Special Needs**
College of DuPage COACH (Career Opportunity Achievement) Program
630.942.2208 CE@cod.edu
Elmhurst College ELSA (Elmhurst Learning and Success Academy)
630.617.3309 ahlbergt@elmhurst.edu
Harper College Career Skills Institute
847.925.6000 ext 2076 sbasten@harpercollege.edu
P.A.C.E. (Path to Academics, Community and Employment) at NLU
312.261.3770 paceprogram@nl.edu
Southern Illinois University Achieve Program
618.453.6155 achieve@siu.edu

- PUNS (Prioritization of Need for Services)**
www.dhs.state.il.us/page.aspx?item=41131
DHS.DDD.PUNS@illinois.gov
Email name, DOB, address, and ISC to find approx. date of PUNS selection
- Regional Transportation Authority (RTA)**
<https://www.rtachicago.org/rider-resources/rta-fare-programs>
Oversees three transit agencies in northeastern Illinois; the Chicago Transit Authority, Metra, and Pace. RTA serves Cook, DuPage, Kane, Lake, McHenry and Will counties.
www.rtachicago.org/index.php/rider-resources/accessible-transit/paratransit-certification
ADA Certifier: 312.663.4357
ADA Paratransit (door-to-door): 312.663.4357
www.Pacebus.com
Other options include Local Village or Township Dial-a-Ride, Lyft, and Uber.
- Respite Services**
847.385.5335 mbosco@clearbrook.org
Available for individuals with IDD who are not already receiving Medicaid Waiver services.
- Special Needs Trust (SNT)**
<https://www.specialneedsalliance.org>
An estate planning tool that enables a person with a disability to receive financial support without negatively impacting Medicaid or Social Security benefits.
- Transition Outreach Specialist, Clearbrook (TOS)**
mschwartz@clearbrook.org 847.385.5354
Assists with transition planning, connection to resources for Supported Decision-Making, guardianship, applying for SSI and Medicaid and additional information about services available through Medicaid Waiver (eg. CILA, HCBS) and other resources.

For more information contact Michelle Schwartz at mschwartz@clearbrook.org